



SIX SENSES  
RESIDENCES

COURCHEVEL

Guest Guide



  
SIX SENSES  
RESIDENCES  
COURCHEVEL

## Welcome to life at the top

We would like to thank you for booking at Six Senses Residences Courchevel, we can't wait to welcome you. The concierge team is delighted to assist you with any enquiries or requests, and are here to help with everything from organising your arrival in Courchevel, to making reservations as well as booking activities. We have put measures in place to support a minimal contact service also, if this is preferred.

We are here to make your stay in Courchevel unforgettable.

# Transfers by car

## *Transport types...*

Luggage Van	Luggage only
Van Mercedes Vito Tourer	Up to 8 persons
Van Luxe Mercedes Class V	Up to 7 persons

## *Pick-up locations, straight to our door...*

Moûtiers	43 mins
Chambéry	1 hr 34 mins
Genève Aéroport	2 hrs 30 mins
Annecy	1 hr 57 mins
Lyon Aéroport	2 hrs 19 mins
Grenoble Aéroport	2 hrs 20 mins
Turin	3 hrs 36 mins
Milan	5 hrs
Monaco	6 hrs 30 mins
Paris	7 hrs 30 mins
Val Thorens	1 hr 20 mins



10% extra charge will be applied for overnight transfers (between 10pm and 3am).

10% discount when booking arrival and departure, no cancellation possible.

For any other transfers, a 48-hour cancellation policy applies before the journey. Under 48-hours, the full price will be charged.

For late arrivals or if guests wish to put their transfer on hold, an additional hourly rate will apply.

# Transfers by helicopter

## *Transport types...*

H 125 5 seats

H 130 6 seats

Twin Engine On request

## *Pick-up locations, to Courchevel Altiport...*

Annecy 20 mins

Cannes 1 hr

Chambéry 20 mins

Genève 30 mins

Grenoble 30 mins

Lausanne 35 mins

Lyon 40 mins

Megève 15 mins

Milan 50 mins

Monaco 1 hr

Nice 1 hr

Gstaad 40 mins

Saint-Tropez 1 hr 15 mins

Sion 30 mins

Turin 30 mins

Zurich 1 hr 20 mins



Subject to weather conditions and airport slots approval.



## Pre-arrival menu

---

Pre-arrival grocery shopping (minimum of €25 + 15% service charge)

---

Grocery shopping during your stay (minimum of €25 + 15% service charge)

---

Wine and champagne (on request)

---

Christmas tree ordering from 15<sup>th</sup> December to 10<sup>th</sup> January

---

Flowers

---

Babysitting from €40 per hour (minimum 3 hours)\*

---

Any other special requests you might have!

---

Don't forget to book your spa appointment... see page 45 for more

---

\*Prices will increase by 25% after midnight. Prices for Christmas and New Year's Eve upon request.  
There is a 72-hour cancellation policy, after which the full price will be charged.

## Wine delivery



# Private chef

Host an unforgettable meal, with a customised menu just for you.

<b>Breakfast</b> <i>Live station breakfast</i>	€100 pp
<b>Dinner</b> <i>Price in addition to the groceries list</i>	€225 pp
<b>Half-board</b> <i>Price in addition to the groceries list</i>	€300 pp
<b>Full-day</b> <i>Price in addition to the groceries list</i>	€375 pp

# Private butler

Helping hands for meals to remember.

<b>Breakfast</b> <i>2h30/day</i>	€300
<b>Dinner</b> <i>5h/day</i>	€425
<b>Half-board</b> <i>8h30/day (Lunch / tea-time / dinner or breakfast / tea-time / dinner service)</i>	€570
<b>Full-day</b> <i>11h/day (Breakfast, lunch, tea-time and dinner service)</i>	€700

*Terms and conditions apply, please get in touch with our team for full details*







# Skiing

There's no doubt about it, Courchevel was made for skiing. At the top are three great mountain bowls facing North, resulting in the best snow in the whole area. In the middle, a collection of smooth, long, perfectly pitched slopes that are meticulously groomed and surrounded by pretty forests. There is terrain to suit everyone from beginner to expert. The local slopes comprise 150km of runs, of which 21 are green, 41 blue, 36 red and 11 black. Whether you're a beginner, intermediate or expert skier, you can be confident that you'll receive a world class, unique and tailored ski service here in Courchevel. Enquire with the team to see which skiing is right for you. Please see rates below:

Private ski instructor
Group ski lessons
Alpine or downhill skiing
Freestyle skiing
Ski touring
Snowboarding
Off-piste skiing
Heli skiing
Telemark skiing
Adaptive skiing
Family park skiing
Piu Piu Ski School (from 3 years old)
Kindergarten (from 18 months old)



# Types of Ski Pass

<b>Adulte</b> 13-65 ans	4 heures   4 hours
Adult 13-65 years	1 jour   1 day
	2 jours   2 days
	3 jours   3 days
<b>Enfant</b> 5-13 ans	4 jours   4 days
Child 5-13 years	5 jours   5 days
	6 jours   6 days
	7 jours   7 days
	8 jours   8 days
<b>Senior</b> 65-75 ans	9 jours   9 days
Senior 65-75 years	10 jours   10 days
	11 jours   11 days
	12 jours   12 days
<b>Famille</b> 2 parents + 2 enfants	13 jours   13 days
2 parents + 2 children	14 jours   14 days

## BROWSE SKI PASSES

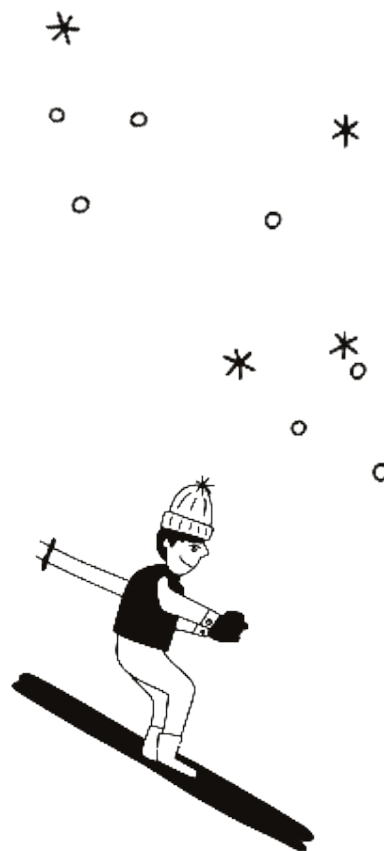
<https://www.skipasscourchevel.com/en/>

## SKI PASS ARRANGEMENT

Arrangement of ski passes can be taken care of at check-in. If you wish to arrange ski passes in advance, please visit XXX and it will be delivered on arrival.

## INNOVATING AND ELIMINATING

Recycle your ski pass with us at the main reception or Ski Lodge.





## Events and activities



### Restaurants

Browse the best dining in Courchevel. The concierge team will be more than happy to assist with making bookings.

*Payment via link is required to confirm bookings (100 euros per Pax, 200 euros per pax for Michelin Star restaurants. Bookings are non refundable and non cancellable.*



### Crafted experiences

Crafted experiences to enjoy both on and off the slopes, for all the family. The concierge team will be more than happy to assist with making bookings.

Seasonal events happening in Courchevel can be **browsed here.**

*Full payment is required to confirm bookings. Bookings are non refundable and non cancellable*

## Sumosan

Offering its signature sushi and contemporary Japanese dishes, Sumosan restaurant and bar provides a welcome antidote to traditional mountain cuisine. You can find it next door to the main reception. The menu features signature Sumosan favourites served snow-side, including tuna and truffle rolls, Japanese salmon rice pizza, grilled creamy spicy kamchatka king crab leg and thinly sliced yellowtail with truffle yuzu vinaigrette. The rich decadent chocolate fondant is the perfect ending for your tastebuds.







## 5-Star Skiing with Ski Set

Skiing with Six Senses is an experience in itself; a special Ski Concierge service offers residents a helping hand just when they need it most. Ski Set is located next to the reception, and as well as the rental service you can also browse the latest in ski fashion and accessories. Once you've been fitted, your equipment will be taken to our Ski Lodge found on the slopes and you'll be transported there and back by private shuttle whenever you'd like to ski or snowboard.

Our tailored ski-in, ski-out lodge is located at La Croisette, with a private indoor area to enjoy preparation of your equipment in the morning. Once you've finished for the day, drop your equipment back off here and it'll be stored on heated racks ready for the next day while you warm up with a special concoction brewed by our Spa Manager.

*We recommend to arrange your equipment on arrival so you're able to try everything on and find your best fit.*





## Our mountain spa

Inspired by the organic shapes of snow waves, our spa uses biophilic principles to help you feel energized and recover after an exhilarating day on the slopes. From signature therapies to locally inspired treatments, our offering includes the latest body hacks, sports preparation and recovery, to muscle-soothing massages. Uniting a pioneering spirit with holistic wellness, health, sports performance, rejuvenation and beauty treatments, we have the whole of you covered. Sore limbs will thank you.





The spa features five treatment rooms, an indoor swimming pool, outdoor Jacuzzi in the snow, wet facilities including sauna, steam and Kneipp path, a separate relaxation lounge, a gym and a studio for wellness classes. Guests can choose to lose themselves in sensory spa treatments that include a range of restorative therapies focusing on warming tired muscles, rehabilitating fatigued joints and boosting circulation; signature massages to re-energize and relax; and facial and body treatments by The Organic Pharmacy adapted or designed exclusively to keep the skin nourished and hydrated during the winter season.

*Facilities include...*



Indoor pool  
& juice bar



Hot tub in  
the snow



5 treatment  
rooms



Alchemy  
Bar



Gym and  
fitness



Vitality  
area



Reception,  
lounge & retail



## *A sample of signature treatments...*

*Deep Tissue, 60/90 minutes* - release stress, ease muscle tension and improve mobility. Trigger points, hot stones or warm compresses may be used to enhance this treatment.

*Detox, 60/90 minutes* - focused on the upper legs, glutes, lower back, hips, and abdomen. We use dry brushing, a bamboo hitter and silicone cups to stimulate, improve skin tone and reduce the appearance of cellulite.

*Holistic, 60/90 minutes* - combining flowing, soothing, rhythmical, and medium pressure movements on specified areas of concern to bring about a balance.

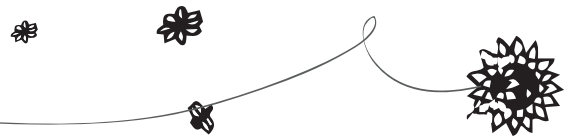
*Movement Restoration, 90 minutes* - improve mobility and flexibility with a full body massage combining pressure point techniques with gentle stretching to increase the range of motion and allow the body to release built-up tension.

*Tension Soother, 30/60 minutes* - a reviving back, neck and shoulder massage using acupressure techniques to relieve muscle tension and restore mobility.

*Head Massage, 30/60 minutes* - a deeply relaxing oil-based massage of head, neck and shoulders using cranio sacral techniques to ease tension and induce a deep sense of calm.

*Relaxed Feet, 30/60 minutes* - restore the body's balance and release aches and pains with a fusion of massage techniques on the meridian lines of the legs and reflex zones of the feet.

*To view the full spa menu and book your spa treatments, please visit the guest app.*







## One Tree at a Time

*Six Senses Residences Courchevel has partnered with One Tree at a Time, an inspiring social enterprise which tackles waste from unwanted ski uniform and clothing, raises awareness among local businesses, and teaches sustainable textile skills through hands-on workshops.*

The outdoor clothing industry generates a high proportion of waste due to fashion-related consumer behavior, where jackets or underlayers are cast aside at the end of a season, often while they are still fit for purpose.

Six Senses Residences Courchevel has partnered with One Tree at a Time, which employs local people to patch and repair garments, raises awareness among local businesses, creates educational content, and delivers hands-on repair workshops. We're supporting a comprehensive workshop series, which invites adults and children to repair classes, t-shirt printing, and upcycling lessons. Ask at the reception desk for more information. 75 percent of any donation goes to community events and workshops, 15 percent to tree planting, and 10 percent to administration.

Founded in 2019 by Gavin Fernie-Jones, One Tree at a Time was set up to encourage independent ski resort businesses to make small adjustments to reduce their environmental impact. In a short space of time, Gavin has galvanized considerable support in his local Alpine community and made a tangible impact.

*We spotted him like a welcome orange jacket in a whiteout!*

# Contact

Concierge

---

T: +33 479 06 93 63

E: [concierge-courchevel@sixsenses.com](mailto:concierge-courchevel@sixsenses.com)

Download the Six Senses app below:



Apple



Android



